

First Floor Plan

scale: 3/16" = 1'-0"

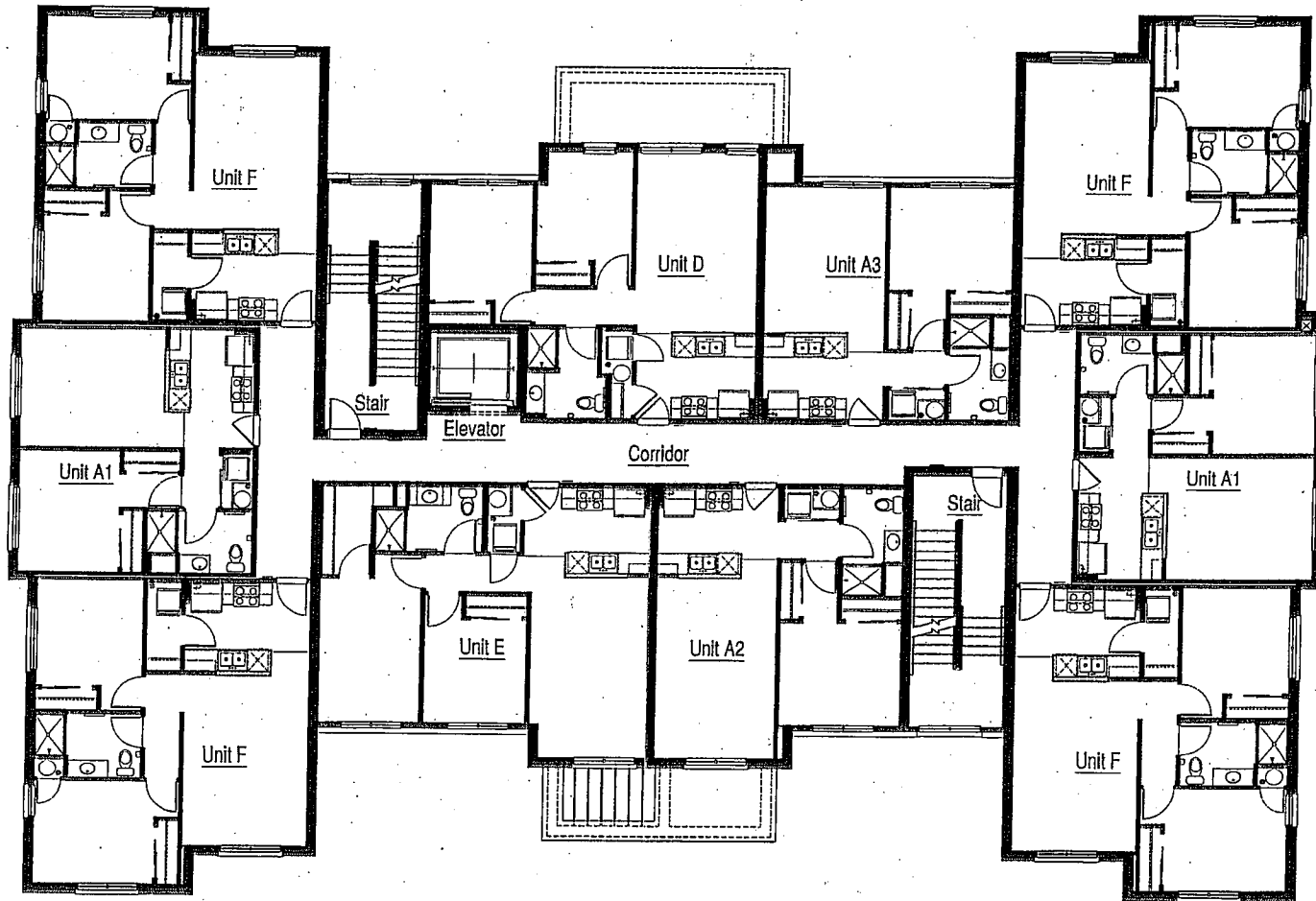
Christ The King Parish
Des Moines, Iowa

Christ the King Seniors Housing
Des Moines, Iowa



The above information is provided as a guide only and is not intended to be a contract. It is subject to change without notice. All dimensions are in feet and inches. All dimensions are approximate. All dimensions are subject to change. All dimensions are subject to change. All dimensions are subject to change.

11-21-10
© 2010 BSB Design, Inc.



Second Floor Plan

scale: 3/16" = 1'-0"

Christ The King Parish
Des Moines, Iowa

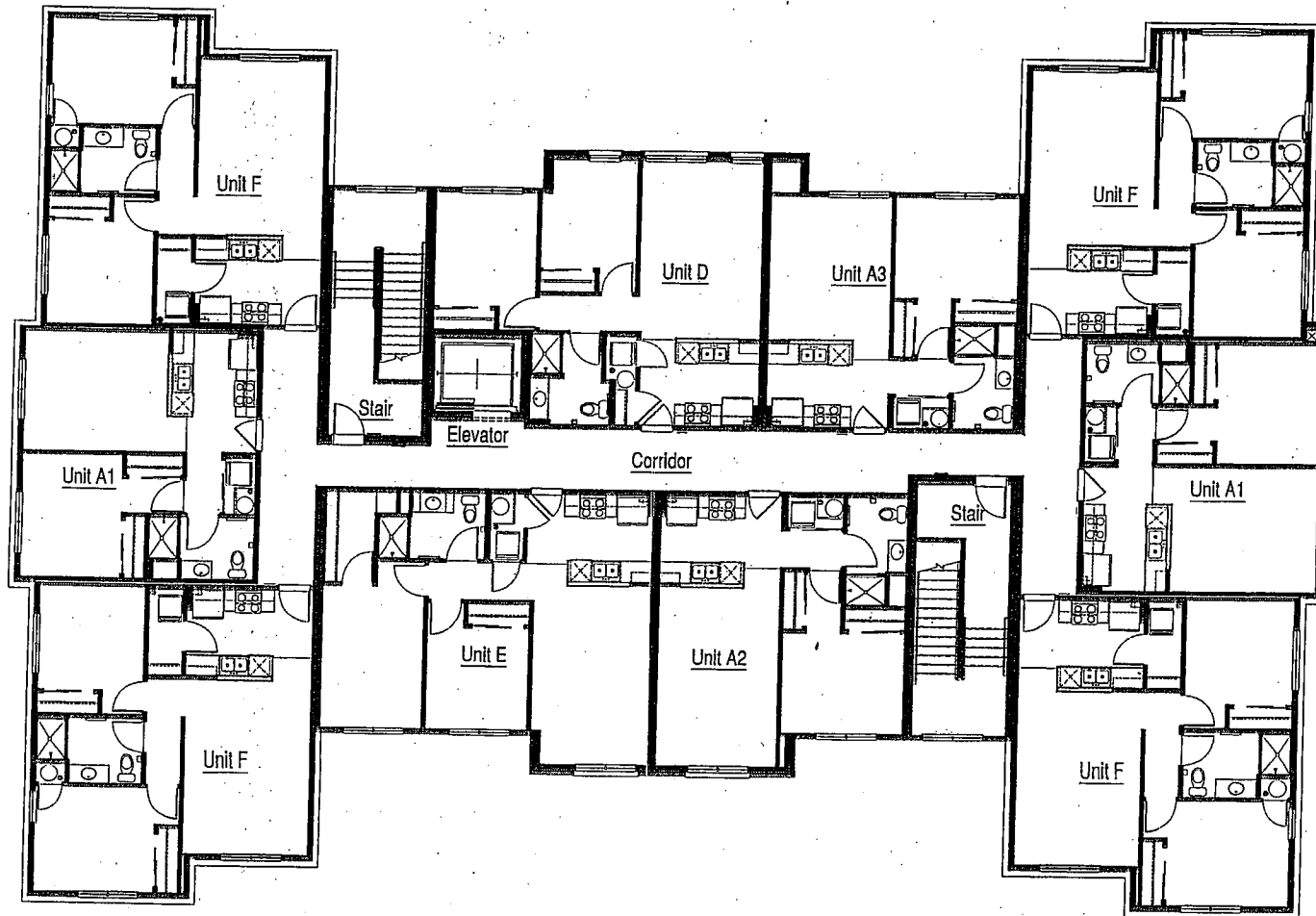
The drawings are prepared as a service to the client and are not to be used for any other purpose without the written consent of the architect. The drawings are not to be used for any other purpose without the written consent of the architect.

Christ the King Seniors Housing

Des Moines, Iowa

11-21-10
© 2010 BSB Design, Inc.





Third Floor Plan

scale: 3/16" = 1'-0"

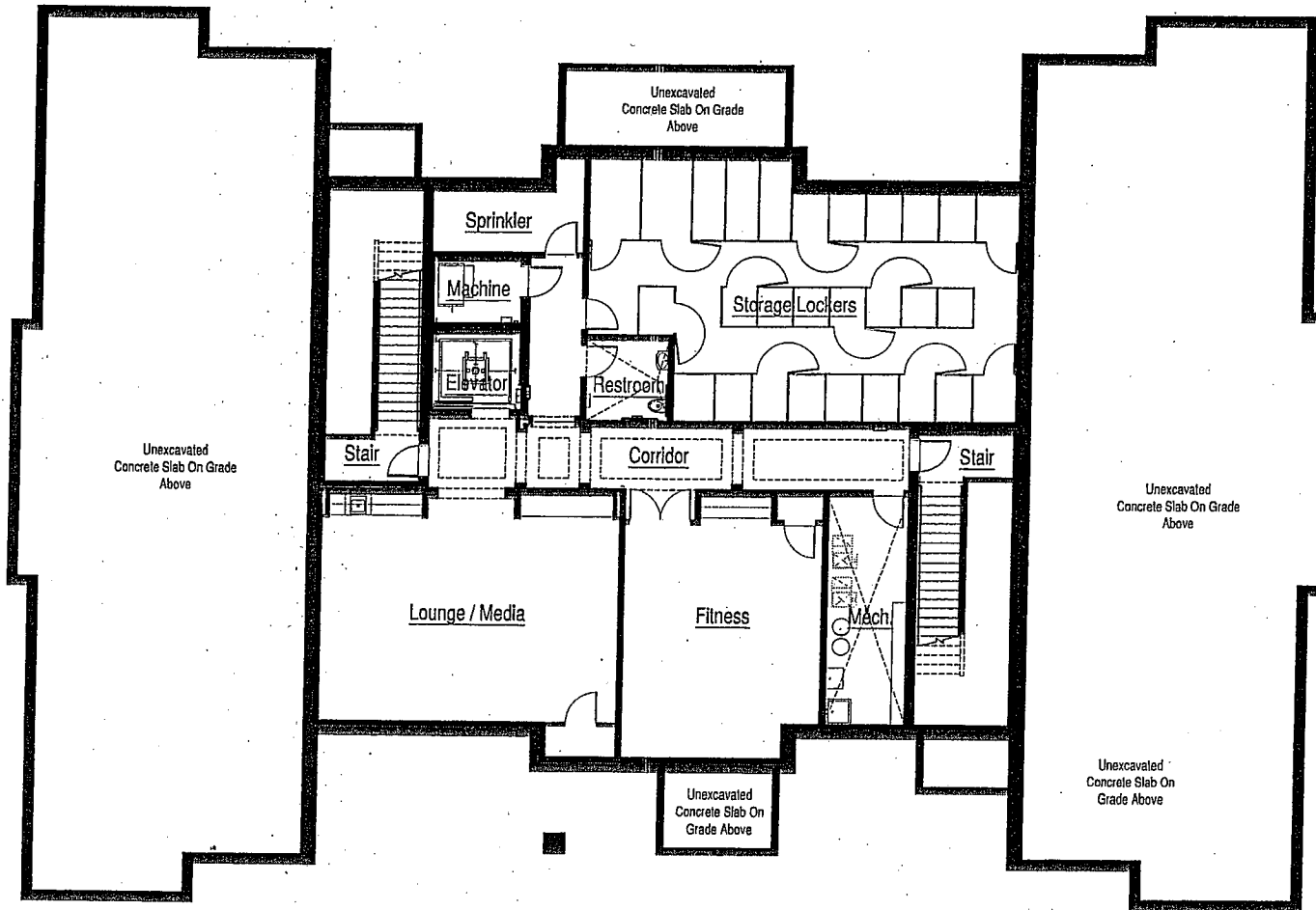
Christ The King Parish
Des Moines, Iowa

This drawing is provided as a guide only. It is not intended to be a contract document. It is subject to change based on field conditions and other factors. It is not to be used for construction without the approval of the architect.

Christ the King Seniors Housing
Des Moines, Iowa

11-21-10
© 2010 BSB Design, Inc.





Lower Level Floor Plan

scale: 3/16" = 1'-0"

Christ The King Parish
Des Moines, Iowa

The drawings are prepared by BSB Design, Inc. and are subject to change without notice. BSB Design, Inc. is not responsible for any errors or omissions on the drawings. All dimensions are in feet and inches unless otherwise noted.

Christ the King Seniors Housing
Des Moines, Iowa



11-21-10
© 2010 BSB Design, Inc.